




DIY KITCHEN
DESIGN

 Remote design

 www.graciedavies.com

How to Measure Your Kitchen for Redesign

Redesigning your kitchen is an exciting project, and it all starts with accurate measurements. Ensuring you have precise dimensions is key to planning the layout, choosing appliances, and selecting units that fit perfectly.

Here's my step-by-step guide on how to measure your kitchen for a redesign.

Tools You'll Need

- Measuring tape or laser measure (recommended!)
- Pencil and paper
- Ruler

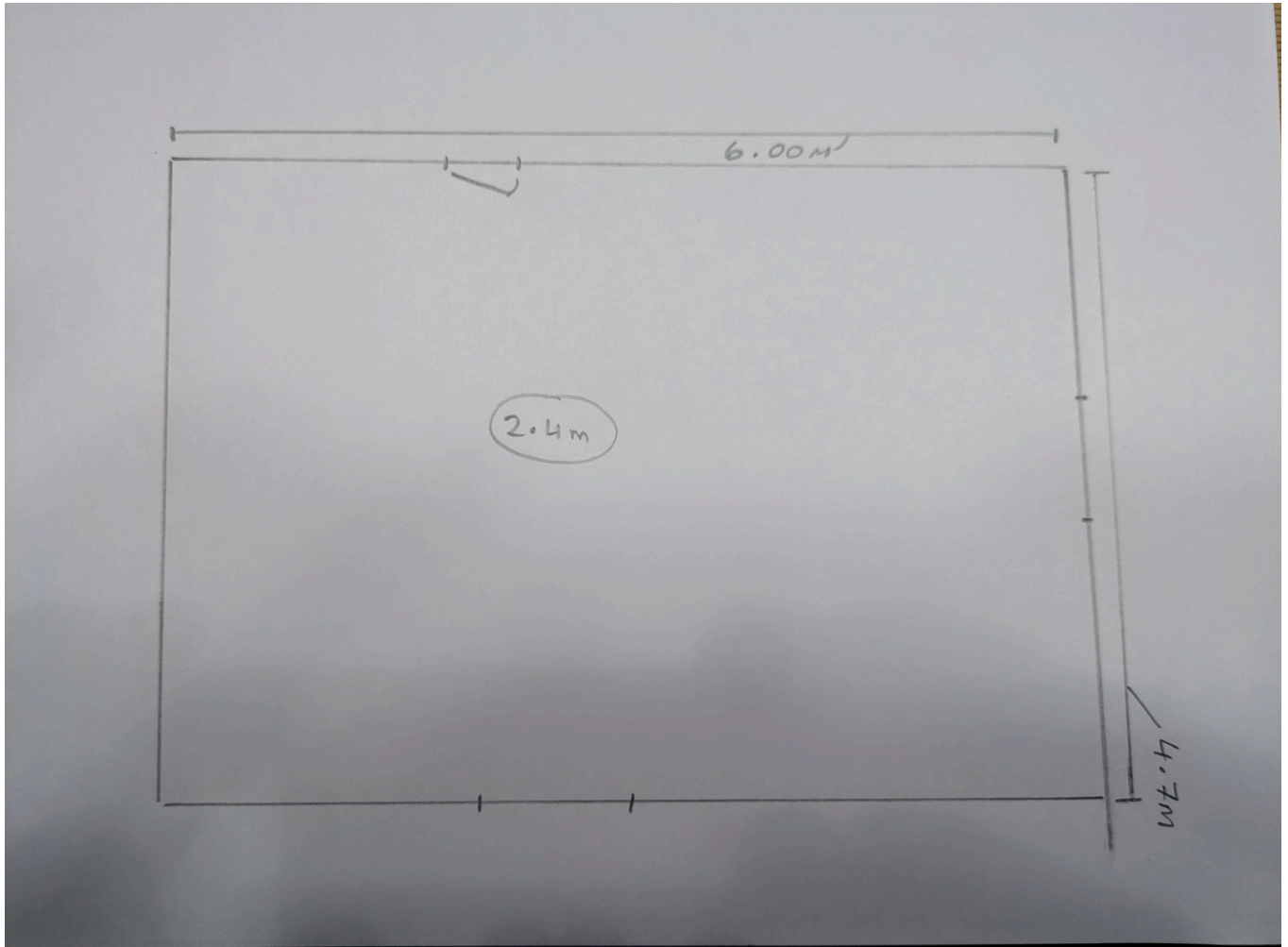
Note: You can draw all of the following on one plan or several plans if you find that easier.

Step-by-Step Guide

1. Draw a Rough Sketch

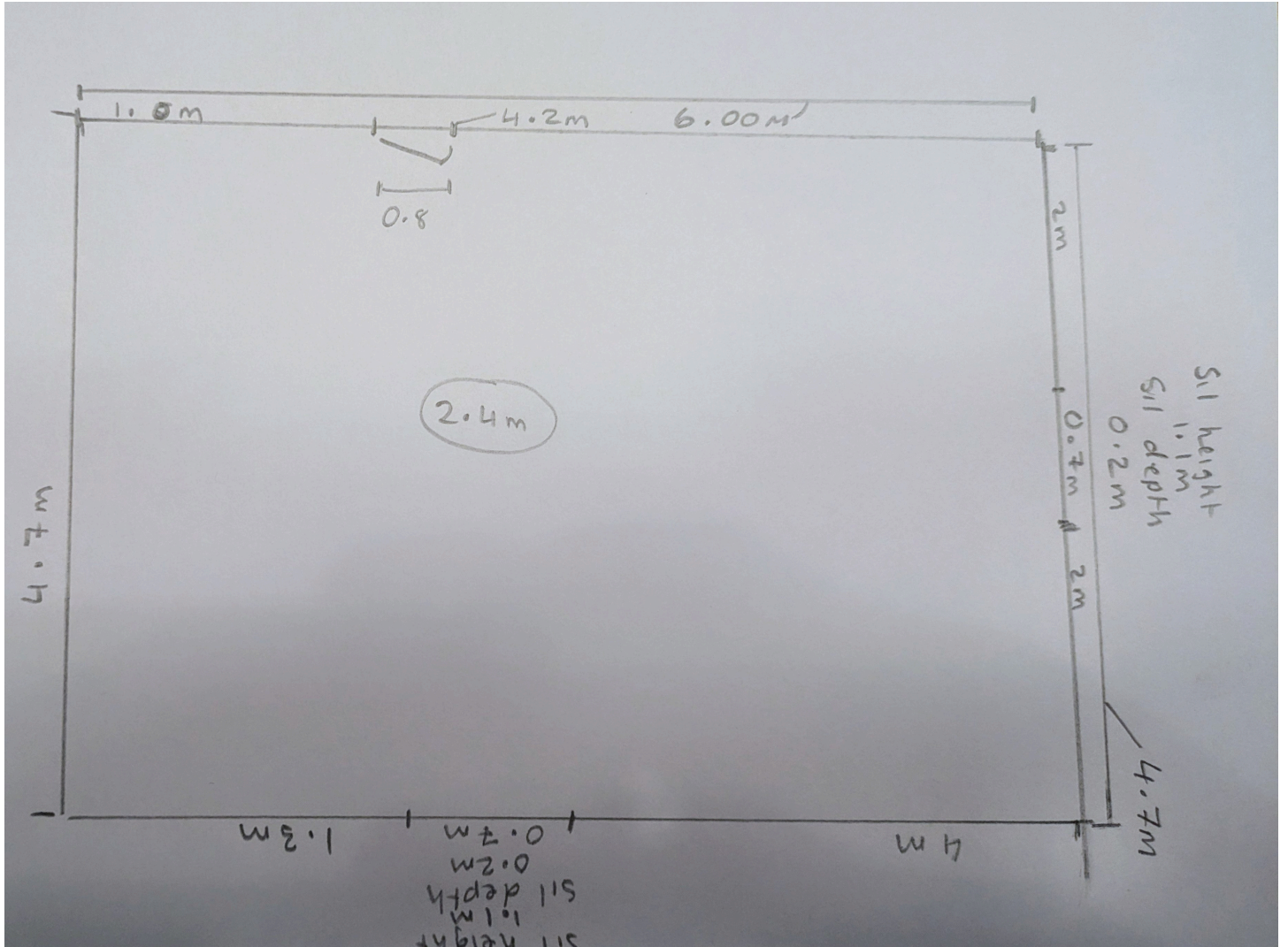
Start by drawing a rough outline of your kitchen. This doesn't need to be perfectly to scale but should include all walls, windows, doors. Show the direction doors open.

- **Measure the total length and width of the room**
Record the measurements in metres centimetres or millimetres (e.g 3.75m, 375cm, 3750mm).
- **Measure the height from floor to ceiling:** Measure in a few areas to check for low spots. This is crucial for installing tall units or wall cabinets. Write the height in the middle of your diagram and circle it.



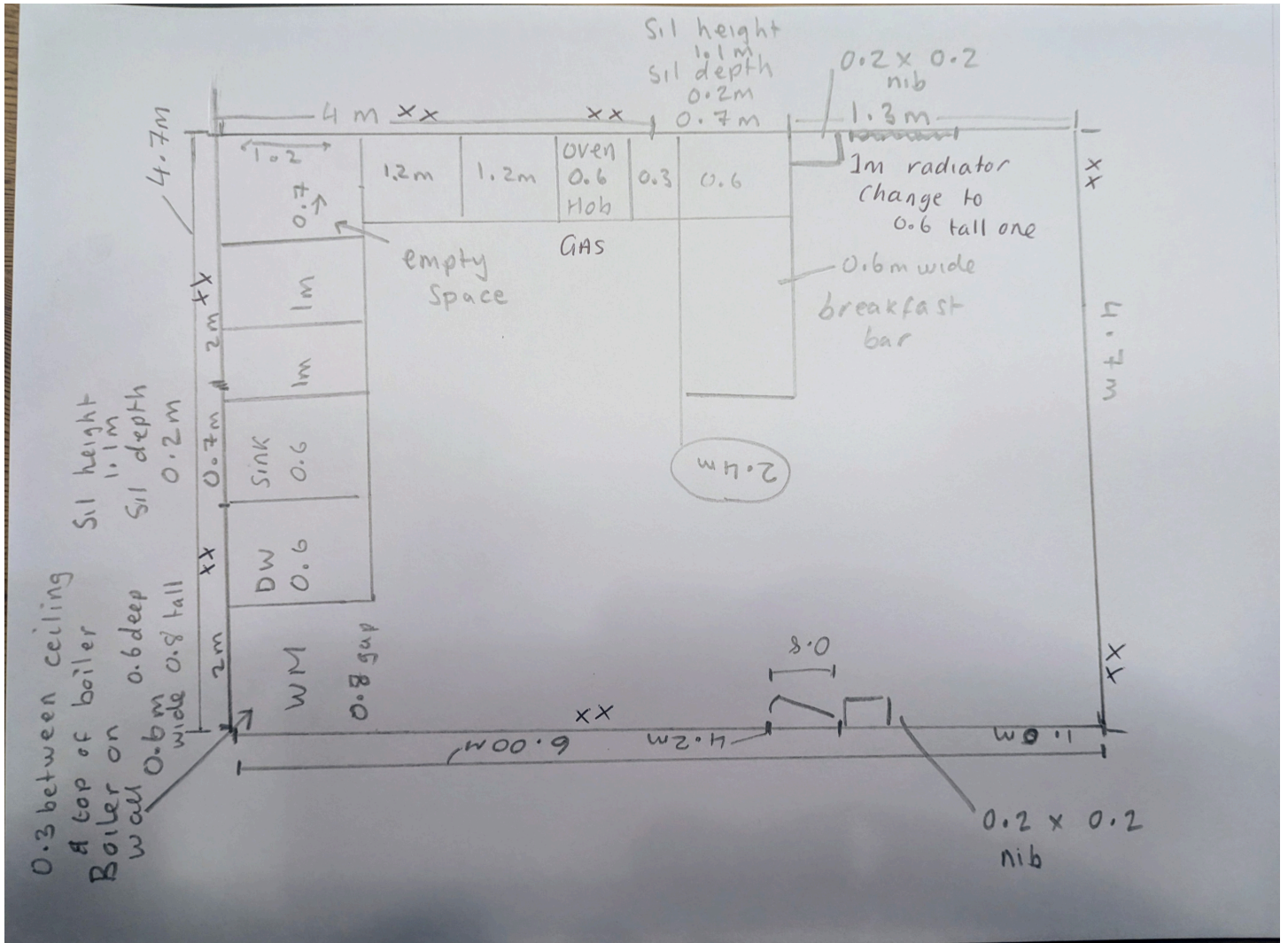
2. Measure the Walls

- **Measure around the room:** Pick a fixed point such as your entrance door and work your way around the room, methodically measuring each wall and any protrusions or recesses.
- **Doors/windows:** When measuring doors, measure them closed from architrave to architrave. Include the depth of window sills as this will be needed when ordering quartz.
- **Record window position on the wall:** Measure from the floor to the bottom of the window and from the wall to the edges of the door/window.



3. Locate Utilities and Existing Features

- **Mark the position of any important utilities:** Water supply and waste (sink), gas line if applicable. Mark the size and position of your boiler. Mark single sockets with an X and double sockets with XX.
- **Units:** Mark the existing base units and their widths. Make a note of any base units that are reduced depth as they may be hiding something behind such as pipework. Don't worry about them being to scale as long as they are labelled correctly!
- **Appliances:** Measure any appliances you plan to keep, such as the refrigerator or oven.
- **Radiators:** Measure the location of radiators and whether you wish to keep or move them.
- **Boxing in:** Note any boxed in pipes, beams, columns or structural nibs.



Tips for Accurate Measurements

- Always measure twice to ensure accuracy.
- Use a consistent unit of measurement throughout the process.
- Label each measurement clearly on your sketch.